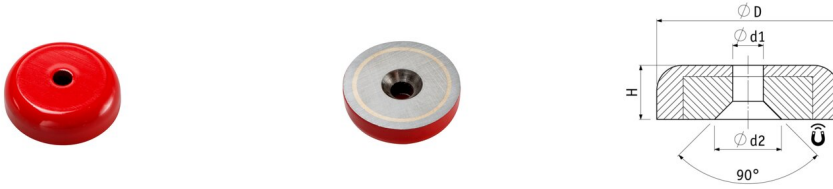


Flat pot magnets of Aluminum-nickel-cobalt (AlNiCo)

Pot magnets made of AlNiCo, steel housing, with bore and countersink, painted red



Article number	D mm	d mm	d1 mm	H mm	Adhesive force* N	Weight g	Temperature °C	Surface
F19R	19.1 ^{+0.5} / _{-0.5}	3,7	8,7	7,5 ^{+0.3} / _{-0.3}	30	17	180	rot lackiert
F29R	28.6 ⁺¹ / ₋₁	4,8	10,5	8,5 ^{+0.5} / _{-0.5}	40	43	180	rot lackiert
F38R	38.1 ⁺¹ / ₋₁	4,8	10,5	10,4 ^{+0.3} / _{-0.3}	80	82	180	rot lackiert

PRODUCT NOTE:

This robust pot magnet impresses with its combination of performance and user-friendliness. The AlNiCo magnetic core provides a reliable holding force for a wide range of applications. Aluminium-nickel-cobalt magnets can withstand temperatures from a maximum of 500 to 550 °C without losing their magnetic properties.

The painted steel housing protects the magnet from damage and ensures a long service life.

The integrated hole and countersink allow easy and secure mounting in various positions. The red paint finish not only makes the pot magnet stand out, but also protects it from corrosion.

Ideal for:

- Workshops
- warehousing
- DIY
- industry

* The forces have been determined at room temperature on a polished plate made of steel (S235JR according to DIN 10 025) with a thickness of 10 mm (1kg~10N). A deviation of up to -10% from the specified value is possible in exceptional cases. In general, the value is exceeded. The type of application (installation situation, temperatures, counter anchors, etc.) sometimes influence the forces enormously. The values given are for orientation purposes. Let our experts advise you.